



# Year ending June 2022 presentation

Presenter: Sean West, Chief Financial Officer



# Disclaimer

This presentation has been prepared by and is the sole responsibility of Arqiva Group Limited and its subsidiaries (the "Company") and has been prepared for information and update purposes in respect of the Company's secured debt programmes only (and has not been prepared in any other context) and does not constitute or form part of a prospectus or offering memorandum or of any offer for sale or subscription of, or solicitation of any offer to buy or subscribe for, any securities nor should it or any part of it form the basis of, or be relied on in connection with, any contract or commitment whatsoever. This presentation has not been verified and no representation or warranty, either express or implied, is given or made by any person in relation to the fairness, accuracy, completeness, correctness or reliability of the information or any opinions contained herein and no reliance whatsoever should be placed on such information or opinions. No responsibility or liability is or will be accepted by the Company as to or in relation to the accuracy, sufficiency, completeness or correctness of this document or the information forming the basis of the document or for any reliance placed on the document by any person whatsoever. No representation or warranty, expressed or implied, is or will be made as to the achievement or reasonableness of, and no reliance should be placed on, any projection, targets, estimates, forecasts and nothing in this document should be relied on as a promise or representation as to the future.

The financial information set forth in this presentation has been subjected to rounding adjustments for ease of presentation. Accordingly, in certain instances, the sum of the numbers in a column or a row in tables may not conform exactly to the total figure given for that column or row. Furthermore, percentage figures included in this presentation have not been calculated on the basis of rounded figures but have been calculated on the basis of such amounts prior to rounding.

This material should not be regarded by recipients as a substitute for the exercise of their own judgement and assessment. Any opinions expressed in this material are subject to change without notice and neither the Company nor any other person is under any obligation to update or keep current the information contained herein. This material, which does not purport to be comprehensive, has not been independently verified by the Company or any other party. The document does not constitute an audit or a due diligence review and should not be construed as such.

Certain information and statements constitutes "forward-looking statements". These statements, which contain the words "anticipate", "believe", "intend", "estimate", "expect" and words of similar meaning, reflect the directors of the Company's beliefs and expectations and are subject to risks and uncertainties that may cause actual results to differ materially. These risks and uncertainties include, among other factors: actions or decisions by governmental and regulatory bodies, or changes in the regulatory framework in which the Company operates; changes or advances in technology and availability of resources such as bandwidth spectrum, necessary to use new or existing technology, or consumer preferences regarding technology; the changing business or other market conditions and the prospectus for growth anticipated by the management of the Company; the Company's ability to realise the benefits it expects from existing and future projects and investments it is undertaking or plans to or may undertake; the Company's ability to develop, expand and maintain its telecommunications infrastructure; the Company's ability to obtain external financing or maintain sufficient capital to fund existing and future investments and projects; the Company's dependency on only a limited number of key customers for a large percentage of its revenue; and expectations as to revenues under contract. These and other factors could adversely affect the outcome and financial effects of the plans and events described herein. As a result, you are cautioned not to place undue reliance on such forward-looking statements. The Directors disclaim any obligation to update their view of such risks and uncertainties or to publicly announce the result of any revisions to the forward-looking statements made herein, except where it would be required to do so under applicable law. Past performance should not be taken as an indication or guarantee of future results.

Certain industry and market data in this presentation was obtained from various external sources that the Company believes to be reliable, but the Company has not verified such data with independent sources and there can be no assurance as to the accuracy or completeness of the included information. Accordingly, the Company makes no representation as to the accuracy or completeness of that data, and such data involves risks and uncertainties and is subject to change based on various factors.

No representation or warranty, expressed or implied, is or will be made and, save in the case of fraud, law or other regulation may restrict the distribution of this document in certain jurisdictions. Accordingly, recipients of this material should inform themselves about and observe all applicable legal and regulatory requirements. Any failure to comply with any applicable restrictions may constitute a violation of the laws of such other jurisdiction. This document does not constitute an offer to sell or purchase or an invitation or solicitation of an offer to subscribe for or purchase securities in any jurisdiction and is not intended to provide, and must not be taken as, the basis of any decision and should not be considered as a recommendation to acquire any securities of the Company. Nothing herein shall be taken as constituting the giving of investment advice. To the fullest extent permitted by law, neither the Company nor any of its affiliates, officers, agents, employees or advisors, accept any liability whatsoever for any loss arising from any use of, or reliance on this presentation.

In the United Kingdom, this presentation is being distributed only to, and is directed only at: (i) persons who have professional experience in matters relating to investments falling within Article 19(5) of the Financial Services and Markets Act 2000 (Financial Promotion) Order 2005, as amended (the Order); and/or (ii) high net worth entities falling within Article 49 of the Order, and other persons to whom it may otherwise lawfully be communicated (all such persons together being referred to as relevant persons).

By attending and/or reading this presentation you agree to be bound by the foregoing limitations and conditions.



- A** ▶ **Executive summary**
- B** ▶ **Business and financial summary**
- C** ▶ **Detailed financials**
- D** ▶ **Capital structure**

# Executive summary

**Extension of TV  
and Radio  
multiplex  
licences to mid-  
2030s**

**EBITDA of £341m  
ahead of  
guidance**

**Refinancing of  
£625m junior  
notes**

**CEO and  
executive team  
changes**

**Change in  
shareholder**

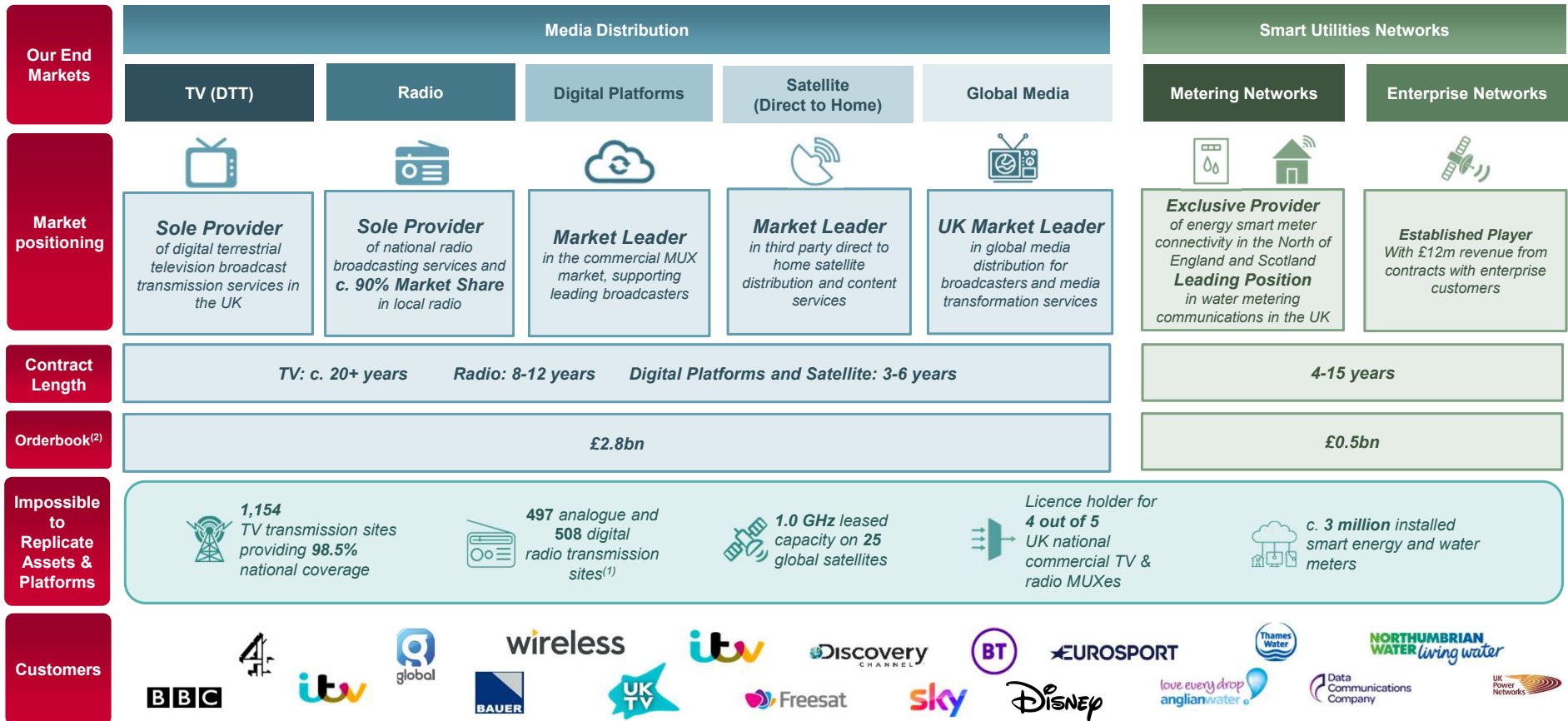
**Completing the  
TSAs following  
the telecoms  
business sale**



# **Business and financial summary**

# Arqiva at a glance

## We enable mission-critical services in Media Distribution and Smart Utilities



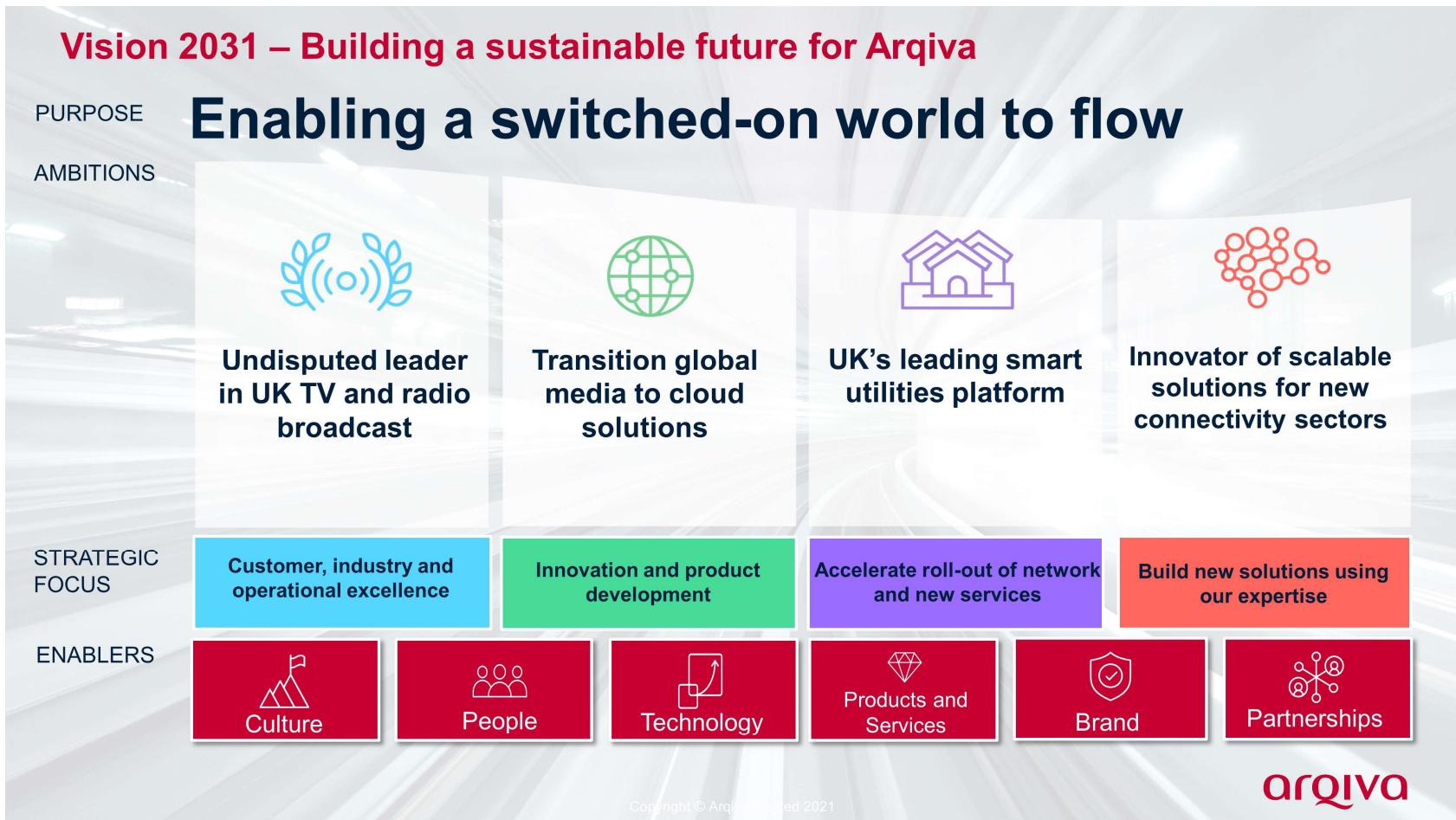
6

Source: Company Information.

1 Sites may be used for more than one service

2 As of 30 June 2022 and reflects in-year change to how the order book is reported internally

# Strategic overview





# Experienced management team

Experienced management team with strong track record and continuity going forward



**Shuja Khan**

20+

CEO

- Joined Arqiva in January 2020
- Cable & Wireless** Chief Commercial Officer 2017-18
- Liberty** Global Vice President, Transformation 2016-17
- Virgin Media** Various commercial leadership roles between 2010-16



**Sean West**

20+

CFO

- Arqiva** CFO since May 2019, having joined as Director of Treasury and Corporate Finance in 2015
- Senior corporate finance and treasury positions at ICG and Land Sec
- Fellow of the Association of Corporate Treasurers



**Katrina Dick**

20+

Chief Legal Officer

- Joined **Arqiva** in April 2022 with experience in energy, retail, health construction and professional services
- Previously interim GC at **Anzo** and regional GC at **Vice Media**
- Other senior roles in media and broadcasting sector



**Adrian Twyning**

10+

Chief of Operations

- Joined Arqiva in March 2021
- Dixons Carphone**: number of senior operations roles leading large-scale operations and business transformation
- Senior operation roles at British Gas leading 4,000 field operations team



**Clive White**

30+

Chief Technology and Transformation Officer

- Joined Arqiva in 2018
- RSA (UK)**: led design/implementation of their transformation journey.
- Several transformation related roles at **Lloyds Banking Group**, **Accenture**, **AT&T Global Network Services** and **BSkyB**



**Vivian Leinster**

20+

Chief Simplification Officer

- Joined Arqiva in June 2020
- MS Amlin**: Chief People Officer at specialist insurance provider
- Previously spent four years as People Director at **Bupa UK**, and 10 years in a variety of senior generalist and specialist HR roles at **BT**.



**Peter Baker**

20+

Executive Director, Smart Utilities Networks

- Appointed to **Arqiva** as interim Director of Smart Utilities Networks in June 2022
- Previous roles include Head of Finance, Insurance and Professional Global markets at **Vodafone Business**
- Leadership roles at **CGI**, **Cable and Wireless** and **Colt Technology Services**



**Chris Alner**

20+

Executive Director, Media and Broadcast








- Appointed to **Arqiva** as interim Director of Media and Broadcast in June 2022
- Working almost exclusively in the media and entertainment industry for two decades
- Previous roles have included positions at **Disney**, **MTV** and **BT Vision**

Note: Number of years represents industry/specialism experience



# Financial summary

Managed reductions in programme delivery offset by Smart Utilities growth and cost efficiencies

Key financials ABPL and AGPL (Junior and Senior)	Full year to June 22 results	Full year to June 21 results	Year on year change
<b>Revenue (total)</b> Revenue (continuing ops.)	<b>£606m</b> £606m	<b>£623m</b> £618m	 <b>3%</b> 2%
<b>EBITDA (total)<sup>1</sup></b> EBITDA (continuing ops)	<b>£340m</b> £340m	<b>£334m</b> £332m	 <b>2%</b> 2%
<b>Working capital movement</b>	<b>£24m</b>	<b>£75m</b>	 <b>68%</b>
<b>Capital expenditure</b>	<b>£(89)m</b>	<b>£(86)m</b>	 <b>3%</b>
<b>Operating cash flow after capital and financial investment activities<sup>2</sup></b>	<b>£252m</b>	<b>£324m</b>	 <b>22%</b>
<b>Senior leverage<sup>3</sup></b>	<b>2.93x</b>	<b>2.44x</b>	 <b>3%</b>
<b>Senior Cashflow<sup>4</sup> ICR</b>	<b>5.76x</b>	<b>5.16x</b>	 <b>11%</b>

## Summary

- **Revenue down 2% year on year from continuing operations**
  - TV and radio broadcast remain stable
  - Offset by natural reduction on the 700MHz Clearance programme
  - Lower revenues due to terminations and pricing pressures on UK DTH, managed media service and multiplex products
  - Expected decrease due to completion of TSA's post the Telecoms sale
  - Increase in revenue from the Smart Utilities business due to ramp up of activity on water metering contracts driven by strong device sales
  - Increase in energy metering from incremental change requests
- **Reported EBITDA up 2% year on year from continuing operations**
  - Reductions in revenue set out above
  - Offset by margin improvements resulting from cost savings in satellite capacity, managed services and staff costs as well as changes in product mix
  - Partially offset by increases in IT and network and consultancy costs
- **Decrease in working capital inflow** predominantly driven by the recognition of one-off deferred income associated with the sale of the towers business in the prior year not repeated
- **Operating cash flow after capital and financial investment activities lower**
  - Lower working capital inflows due to one-off deferred income recognised in the prior period not repeated
  - Impact of increased exceptional costs predominantly due to restoration and service support for Bilsdale
  - Increase in capex due to Bilsdale offset by completion of projects
- **Senior financial covenants ratios**
  - Senior leverage impacted by lower cash balance held by the senior group due to payments parent company
  - Improved ICR due to increased EBITDA and lower interest charges

Notes

1. "EBITDA" refers to earnings before interest, tax, depreciation and amortisation and excludes exceptional costs
2. "Operating cash flow after capital and financial investment activities" reflect cashflows before interest and financing as detailed on page 16
3. For covenant reporting purposes senior leverage is calculated based on an EBITDA of £341m (FY 21: £332m on a covenant adjusted basis)
4. For the purposes of senior cashflow ICR, cashflow is defined as EBITDA as per note 1 above less: maintenance capex, net corporation tax paid and issuer profit amount payable

# Highlights from the year – Media Distribution

## Business

## Update

- Strong underlying long-term support for DTT platform well into 2030s and beyond
  - DCMS has announced an extension of all national DTT MUX licences, including Arqiva's two DTT MUX licences to 2034
  - Launched the Broadcast 2040+ campaign to safeguard digital terrestrial TV and radio to 2040 and beyond
- TV advertising on the DTT has rebounded strongly post-pandemic with a substantial increase in TV advertising spending
  - TV advertising investment in the UK was £5.5 billion in 2021, up 24%
  - Online-born businesses invest £1.1 billion in TV advertising, an increase of 42%
- Strong platform resilience, national commercial muxes operating at full capacity despite two channels RT and Ideal Shopping going into liquidation
  - Ideal Shopping contract was replaced and extended with the successor Ideal World and new contracts signed with UKTV for Drama +1, That's TV and EarthX alongside the renewals with Narrative, PBS and Gem
  - Closure of COM7 interim MUX in June 2022, as expected, created opportunities for national COM5 and COM6

## DTT and multiplexes

## Radio

- Strong regulatory and government support for both analogue and digital radio
  - DCMS extended DAB multiplex licences, Digital One (100% owned by Arqiva) and Sound Digital (40% Arqiva ownership) to 2035
  - The Government's Radio and Audio Review support the need to protect spectrum for analogue radio to 2030 and beyond with no analogue switch-off within this period
- Both national DAB multiplexes remain at full capacity
- Strong recovery in radio advertising spend post pandemic

## Satellite capacity

- In June 2022, as planned, returned transponder capacity to Eutelsat, representing material cost savings over the coming years

# Highlights from the year – Smart Utilities

## Business Update

- | Business                         | Update   |
|----------------------------------|--|
| <b>Anglian Water</b>             | <ul style="list-style-type: none"><li>Continued delivery of smart metering network for Anglian Water to support a deployment of 789,000 meters across 24 planning zones by 2025, followed by network support to 2040<ul style="list-style-type: none"><li>As of June 2022 over 367,000 meters installed</li></ul></li></ul>  |
| <b>Northumbrian Water</b>        | <ul style="list-style-type: none"><li>Arqiva has been selected by Northumbrian Water to deliver an initial roll-out of a smart metering network in Essex<ul style="list-style-type: none"><li>The initial five-year contract saw Arqiva building and monitoring the fixed network infrastructure for 11,000 domestic meters.</li><li>The contract was extended for further 28,000 meters and for 15 years which will be followed with formal procurement for 270,000 meters</li></ul></li></ul>  |
| <b>Thames Water</b>              | <ul style="list-style-type: none"><li>Continued delivery of smart metering network that enables the collection, management and transfer of metering data for Thames Water<ul style="list-style-type: none"><li>Contract renewal for 10 years</li><li>Expansion to Thames Valley with 11 sites and c. 108,000 meters by 2025</li><li>Over 780,000 meters installed as at 30 June 2022 and well over 18 million meter readings being delivered per day</li></ul></li></ul>   |
| <b>Smart Energy</b>              | <ul style="list-style-type: none"><li>The network covers 99.5% of premises in Northern England and Scotland as planned</li><li>There are currently over 2 million communications hubs operating on the network representing 20% of the total UK installations</li><li>Green service delivery status with strong pipeline for incremental change requests</li></ul>   |
| <b>New PoCs and water trials</b> | <ul style="list-style-type: none"><li>Leveraging our relationship with utility customers we have developed and trialling a number of proofs of concepts (PoCs) including:<ul style="list-style-type: none"><li>Hybrid connectivity PoC with SGN</li><li>Engaged with Thames Water on Leakage as a Service PoC</li><li>Sewer Level Monitoring PoC trial has commenced with Anglian Water</li></ul></li><li>In Midlands, Arqiva continues to participate in a multi-vendor, multi-technology smart water metering evaluation trials with a major water company</li><li>Participating in RFI launched by Southern Water for 1.2m meters</li></ul> |

# Highlights from the year - Corporate

## Business

## Update

### CEO and management changes

- Shuja Khan replaced Paul Donovan as a CEO
- To drive business' growth and simplification two new commercial Executive Director roles and a Chief Simplification Office role was created

### Separation

- Following the sale of Telecoms business, Arqiva has completed and exited all Transitional Services Agreements by the end 2021 as planned

### Transformation

- The Transformation Programme has delivered releases across Site Management Platform (Siterrra), Service Management (ServiceNow) and Financial Management (Oracle ERP) platforms
- Programme expected to complete later this year

### Bilsdale Fire

- Bilsdale fire broke in August 2021
- Freeview TV services to around 99% of impacted households have been restored
- Permanent replacement of the tower is expected in early 2023



# Detailed financials

# Income statement summary (1)

(£m, FY-end 30 June)	Total			Continuing Ops		
	2022	2021	%	2022	2021	%
<b>ABPL and AGPL (Junior and Senior)</b>						
<b>Revenue</b>	<b>606</b>	<b>623</b>	<b>(3)%</b>	<b>606</b>	<b>618</b>	<b>(2)%</b>
Cost of sales	(179)	(209)	14%	(179)	(207)	14%
<b>Gross Profit</b>	<b>427</b>	<b>415</b>	<b>3%</b>	<b>427</b>	<b>412</b>	<b>4%</b>
Operating expenses	(87)	(80)	(9)%	(87)	(80)	(9)%
<b>EBITDA</b>	<b>340</b>	<b>334</b>	<b>2%</b>	<b>340</b>	<b>332</b>	<b>2%</b>
Exceptional revenue	(8)	-	(100)%	(8)	-	(100)%
Exceptional costs	(30)	(26)	(15)%	(30)	(26)	(15)%
Depreciation	(158)	(169)	(7)%	(158)	(168)	(6)%
Amortisation	(13)	(10)	(30)%	(13)	(10)	(30)%
Loss on disposal	(2)	-	(100)%	(2)	-	(100)%
Exceptional other income	5	-	100%	5	-	100%
Other income	8	9	(11)%	8	9	(11)%
<b>Operating profit</b>	<b>142</b>	<b>140</b>	<b>1%</b>	<b>142</b>	<b>138</b>	<b>3%</b>

## Key highlights

- **Revenue down 3% year on year and down 2% from continuing operations** Core TV and radio have remained strong and stable with inflationary increases due to contracted RPI indexation as well as increases on Smart Utilities due to the ramp up of water contracts driven by device sales and energy metering change requests. These increases are offset by expected reduction from the 700MHz Clearance programme and completion of TSAs following the Telecoms business sale as well as the full year impact of terminations and pricing pressures from the prior year across UK DTH, managed media service and multiplex products.
- **Gross profit up 4% year on year from continuing operations** despite the reductions in revenues, margins have improved due to cost savings including satellite capacity, reduction in billable labour due to headcount and changes in product mix.
- **Operating expenses 9% up year on year** due to increases in IT licences and network maintenance as well as consultancy costs as the Group pursues its simplification journey.
- **EBITDA up 2% year on year from continuing operations** despite the decreases in revenue due to changes in products mix and mentioned costs savings
- **Exceptional deduction of £8m to revenue** in relation to service credits for customers as a result of the Bilsdale fire.
- **Exceptional costs up year on year** with two thirds related to restoration costs following Bilsdale fire incident. Further exceptional costs relate to restructuring and severance as the Group embeds changes in the organisational design and corporate finance costs related to strategic shareholder projects.
- **Exceptional other income** up due to stage payment received from insurers in relation to the Bilsdale fire.
- **Depreciation and amortisation down year on year in total** due to reduction in accelerated depreciation from the prior year particularly in connection with assets replaced under the 700MHz clearance programme following programme completion partially offset by increased accelerated amortisation on software assets in the year due to the Group's IT transformation.
- **Operating profit up 3% year on year from continuing operations** due to EBITDA increase and lower depreciation charge offset by increase in exceptional costs

# Income statement summary (2)

(£m, FY-end 30 June)	2022	2021	2022	2021
	ABPL (Junior)		AGPL (Senior)	
<b>Operating profit</b>	<b>142</b>	<b>140</b>	<b>142</b>	<b>140</b>
Interest receivable and similar income	3	1	2	1
Net bank loan and other interest	(93)	(96)	(51)	(54)
Other net interest	(36)	(37)	(32)	(35)
Exceptional gain on disposal of discontinued operations	-	1,038	-	1,038
Other gains and losses	(78)	(75)	(78)	(75)
<b>Profit/(loss) on ordinary activities after external interest</b>	<b>(62)</b>	<b>971</b>	<b>(17)</b>	<b>1,015</b>
Interest payable to parent undertakings	(151)	(136)	(181)	(180)
<b>Profit/(loss) on ordinary activities before taxation</b>	<b>(213)</b>	<b>835</b>	<b>(198)</b>	<b>835</b>
Tax	57	22	54	22
<b>Profit/(loss) for the financial year</b>	<b>(156)</b>	<b>858</b>	<b>(145)</b>	<b>858</b>

## ABPL key highlights

- **Net bank loan and other interest £3m down year on year** due to the reduced debt principal amounts following repayments made on amortising debt instruments
- **Other net interest broadly consistent year on year**
- **Interest payable to parent undertakings up £15m (non-cash) year on year** due to compounding interest accrued on outstanding balances.
- **Exceptional gain on disposal of £1,038m in the prior year** recognised in relation to sale of the Telecoms business for circa £2.0bn net of disposal costs and deferred income generated in relation to future services
- **Other gains and losses of £78m** – arises from negative fair value movements in respect of derivative contracts. Prior year includes £8m loss on exit and recouping of swap arrangements in the year and £56m of related debt repayment costs not repeated.
- **Accounting loss before tax of £213m** includes £446m of non-cash items including depreciation, amortisation, other gains and losses, interest payable to parent undertakings and other net interest charges. Excluding the non-cash charges results in an adjusted profit of £233m (2021: £1,199m).
- **Tax credit of £57m** due to an increase in deferred tax asset recognised



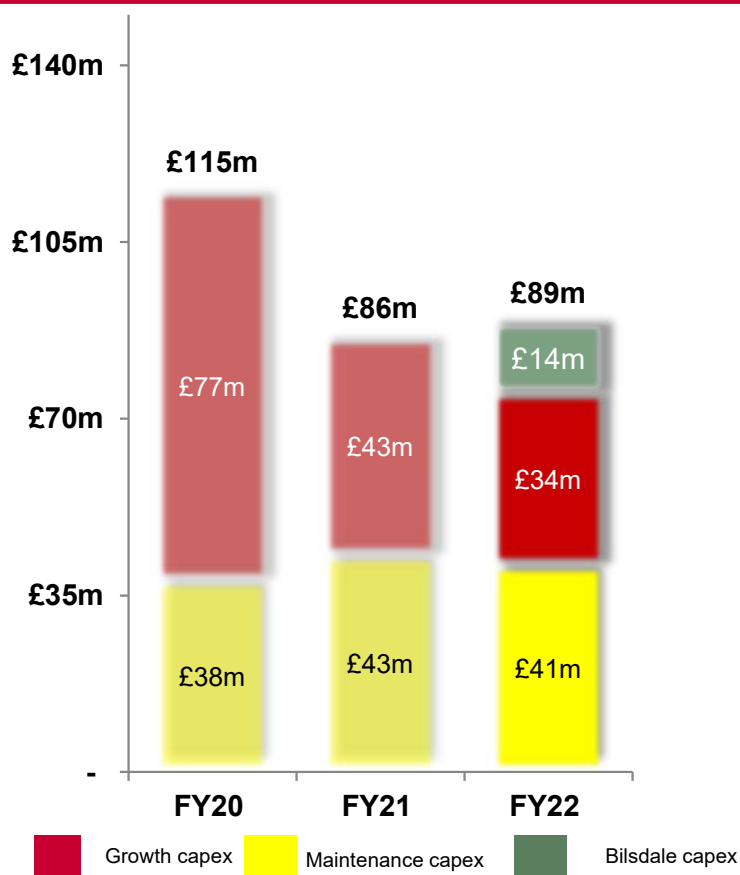
# Cashflow summary

(£m, FY-end 30 June)	2022	2021	2022	2021
	ABPL (Junior)		AGPL (Senior)	
EBITDA	340	334	340	334
Exceptional costs and other	(28)	2	(28)	2
Working capital	24	75	24	75
<b>Net cash inflow from operating activities</b>	<b>336</b>	<b>411</b>	<b>336</b>	<b>411</b>
Net capital expenditure and financial investment	(89)	(86)	(89)	(86)
Receipt of insurance stage payment	5	-	5	-
<b>Operating cash flow after capital and financial investment activities</b>	<b>252</b>	<b>324</b>	<b>252</b>	<b>324</b>
Disposal of subsidiary net of cash disposed	-	1,820	-	1,820
Net interest paid and financing charges	(94)	(104)	(52)	(62)
Payment of lease liabilities	(29)	(48)	(29)	(48)
Principal accretion on ILS	(90)	(14)	(90)	(14)
Break costs on early debt repayment and derivatives	-	(56)	-	(56)
Refinancing costs	-	-	-	-
Cash (outflow)/inflow on redemption of swaps	-	(513)	-	(513)
<b>Net cash flow before financing</b>	<b>39</b>	<b>1,410</b>	<b>81</b>	<b>1,452</b>
Movement in external borrowings	(23)	(1,261)	(23)	(1,261)
Financing - parent undertakings	-	-	(272)	(42)
<b>Increase/(decrease) in cash</b> <small>2020</small>	<b>16</b>	<b>149</b>	<b>(214)</b>	<b>149</b>

## ABPL key highlights

- **Operating cash flow after capital and financial investment activities down £72m year on year** increased EBITDA performance has been offset by lower working capital inflows due to one-off deferred income recognised in the prior year related to Telecoms business sale not repeated and higher exceptional outflows driven by Bilsdale restoration and support costs as well as corporate finance projects
- **Capital expenditure up £3m year on year** See overleaf
- **Disposal proceeds in the prior year** includes cash consideration received on sale of Telecoms business to Cellnex net of cash disposed and deferred income generated in relation to future services
- **Net interest paid and accretion up £66m year on year** Lower interest charges due to lower debt principal has been offset by higher accretion payment related to inflation-linked swaps
- **Break costs on debt repayment and redemption of swaps** reduced outflows from the prior year included significant deleveraging and exit or recouping of associated derivative instruments utilising the Telecoms sale proceeds
- **Movement in external borrowings** reflects debt amortisation payments and working capital facility drawdowns.

# Capex



Note - Growth capex also includes cash sales of fixed assets and change in capital creditors as shown in the table opposite

## Capex breakdown:

- 700 MHz Clearance
- Energy metering – DCC
- Water metering
- Other capex from continuous operations

### Contracted and non-contracted growth capex

- Capital creditors/accruals

### Net Growth capex (as per chart)

Maintenance transformation

Maintenance capex

### Total maintenance capex

Bilsdale – Project Restore

### Total capex

	FY22	FY21
700 MHz Clearance	£2m	£6m
Energy metering – DCC	£11m	£16m
Water metering	£5m	£3m
Other capex from continuous operations	£14m	£19m
<b>Contracted and non-contracted growth capex</b>	<b>£32m</b>	<b>£44m</b>
Capital creditors/accruals	£2m	£(1)m
<b>Net Growth capex (as per chart)</b>	<b>£34m</b>	<b>£43m</b>
Maintenance transformation	£13m	£20m
Maintenance capex	£28m	£23m
<b>Total maintenance capex</b>	<b>£41m</b>	<b>£43m</b>
Bilsdale – Project Restore	£14m	-
<b>Total capex</b>	<b>£89m</b>	<b>£86m</b>

**Growth capex** decrease driven by 700MHz Clearance programme coming to an end, and an IT refresh project for the smart utilities and one-off radio re-engineering projects in the prior period not repeated

**Maintenance capex** includes expenditure associated with structural projects such as mast strengthening, IT and transformation. Transformation has decreased following peak programme activity in the prior year. This has been offset by increase in network portfolio maintenance.

**Bilsdale** expenditure in relation to capital works on the Bilsdale transmitter site including the erection of temporary masts, relay works and site improvements following the fire in August 2021.

# Covenant reporting and guidance

	30 June 2022		30 June 2023
	September 2021 certificate (projected)	September 2022 certificate (actual)	
<b>EBITDA*</b>	£334m	£341m	£342m
<b>Senior net debt</b>	£714m	£1,000m	£1,000m
<b>Senior leverage</b> <i>(default threshold at 6.0x)</i>	2.14x	2.93x	2.92x
<b>Senior ICR</b> <i>(default threshold at 1.55x)</i>	5.60x	5.76x	5.25x
<b>Senior DSCR</b> <i>(default threshold at 1.05x)</i>	2.70x	2.76x	2.86x

## Key highlights

- **Senior ICR and DSCR better than guidance for year ending 30 June 2022** due to better EBITDA performance
- Senior leverage driven by higher net debt figure due to cash distributions to partially fund a prepayment of the existing junior notes on 30 September 2022
- Projected covenants reflect resilient trading performance against the challenging macro-economic environment

Note – All financials are reported as per covenant reporting definitions  
 \*\*EBITDA\* refers to earnings before interest, tax, depreciation and amortisation and is reported as per covenant reporting definitions.



# Capital Structure

# Arqiva debt position

£m	Jun-22	Maturity	Structure	Leverage
<b>SENIOR</b>				
Public Bonds (BBB+/BBB) <sup>1</sup>	280	Dec-32	WBS Platform	
Public Bonds (BBB+/BBB) <sup>1</sup>	164	Dec-37 (exp. Jun-30)		
USPP Series 3	175	Jun-29		
USPP Series 4	89	Dec-29		
EIB Loan	172	Feb-38 (exp. Jun 24)		
Institutional Term Loan	90	Feb-38 (exp. Dec 23)		
Capex and Working Capital Facility	34	Jul-24		
<b>TOTAL DRAWN SENIOR DEBT<sup>2</sup></b>	<b>1,003</b>			<b>2.9x<sup>4</sup></b>
<b>JUNIOR</b>				
Junior Notes (B- / B1) <sup>3</sup>	625 <sup>5</sup>	Sep-23		
<b>TOTAL DRAWN DEBT</b>	<b>1,628</b>			

## Junior Debt Refinancing

- £625m Junior Notes have been redeemed on 30 September by a combination of:
  - £175m cash reserves
  - £450m Term Loan maturing in Mar-28

Note – all values are reported at their carrying value unless specified otherwise

1. S&P / Fitch

2. Total drawn senior debt on this page represents gross debt. On a covenant reporting basis, gross debt is adjusted for finance leases and the deduction of total cash balances, to give net debt

3. Fitch / Moodys

4. Gross debt leverage as at the end of Jun-22 based on EBITDA as per 30<sup>th</sup> June 2022 compliance certificate

5. Will be fully redeemed on 30 September and replaced by a £450m Term Loan maturing in March 2028

# Swaps portfolio

All mandatory breaks have been removed

Summary Terms	Inflation Linked Swaps	Interest Rate Swaps
<b>Overview</b>	ILSs convert fixed rate liabilities into inflation linked liabilities which align with the characteristics of the underlying business	IRSs convert floating rate liabilities into fixed rate liabilities
<b>Notional amount</b>	£682m	£421m
<b>Maturity</b>	2027	IRSs structured to match the maturities of floating rate debt (2024-2029)
<b>Mandatory breaks</b>	None	None
<b>Ranking</b>	Super senior to senior debt (but carries no voting or enforcement rights)	Pari passu with senior debt
<b>Structural Features</b>	Coupon and principal amounts accrete with RPI. Accretion payments paid down annually	N/A
<b>Fair value</b>	£346m	(£32m) <sup>1</sup>



Any questions?





arqiva